
**

*

چکیده

() / / :

*

**

()

()

:

()

/

()

()

()

()

()

() TPPm
TPPa

TPPm

X2

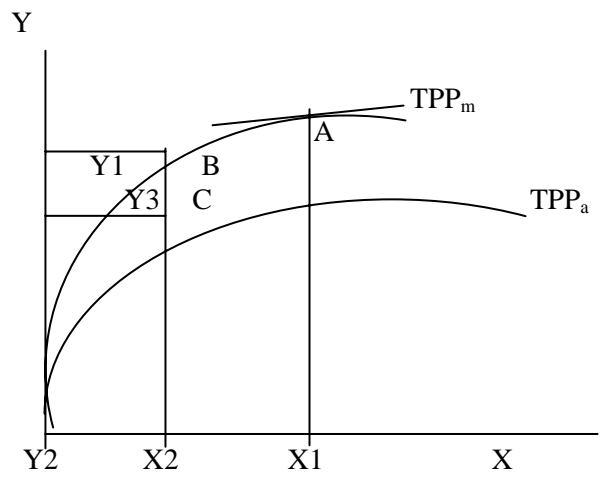
Y2/Y1 Y2 X
Y3

(VMPx = Px)

X X1)
Y3/Y1 (Y1

$$\ln y = \ln f(x) - \mu = a + \sum_{i=1}^n a_i (\ln x_i) - \mu \quad u \geq \quad ()$$

$$y \geq f(x)$$



Farrell, 1957:

:

()

()

$$y_i = f(X_i, \beta) \exp(\varepsilon_i)$$

β i

X_i i

()

y_i

ε_i

:

$$\varepsilon_i = V_i - U_i$$

ε_i

()

(*)

V

$$[V \sim (0, \delta_v^2)]$$

δ_v^2

U

$$[U \sim (u, \delta_u^2)]$$

u_i

U

U

:

U . U : μ

U U : η

η= . : γ

μ η : γ

. U : μ =

: μ = γ =

(OLS) ()

(MLE) ()

()

$$y_{it} = \exp(X_{it}\beta + V_{it} - U_{it})$$

$N(0, \delta_v^2)$ V_{it} $K \times$ X y β
 U_{it} U_{it}

$$U_{it} \sim N(Z_{it} \delta, \delta^2) :$$



$$U_{it} = Z_{it}\delta + W_{it}\delta^2 + \gamma\delta^3$$

$$\gamma = \delta^2 / \delta^2_s \quad \delta^2_s = \delta^2_v + \delta^2$$

$$TE_{it} = \exp(-U_{it}) = \exp(-Z_{it}\delta - W_{it}\delta^2 - \gamma\delta^3)$$

...

FRONTIER /

t

:

$$\ln Y = \beta_0 + \beta_1 \ln \text{Land} + \beta_2 \ln \text{Labor} + \beta_3 \ln \text{Capt} + (V_i - U_i) \quad ()$$

:Y

:Land

:Labor

:Capt

: β

: β_3 β_1

U_i V_i

()

نتایج و بحث

) . (t

$$\begin{aligned}
 & \gamma = \\
 & (\quad \quad \quad U_i \quad \quad) \\
 & ()
 \end{aligned}$$

TARM			
/	/	/	β
/	/	/	β
/	/	/	β
/	/	/	β
	/		δ
	/	2/01	δ
	/	/	δ
	/	/	δ
	/	/	δ
	/	/	δ
/	/	/	σ
/	/		γ
/	/	/	log likelihood

:

$\beta_3 \beta_1 .$
 $\delta \delta$

$\delta \beta .$

χ	χ
/	$\gamma =$
/	/ $\delta =$
/	/ $\delta = \delta = \delta = \delta = \delta =$

:

کارایی فنی زراعت بدون وام در شهرستان ایرانشهر

TARM			
/	/	/	β
/	/	/	β
/	/	/	β
/	/	/	β
	/		δ
/	/	/	δ
/	/	/	δ
/	/	0/	δ
/	/	/	δ
/	/	/	δ
/	/	/	δ
/	/	/	σ
	/		γ
/	/	/	log likelihood

:

χ	χ
	/ $\gamma =$
	/ $\delta =$
	/ $\delta = \delta = \delta = \delta = \delta =$
	/ $\delta = \delta = \delta =$
	/ $\delta = \delta = \delta =$

:

/

	/			/		\leq
/	/			/		$> \leq$
	/		/	/		$> \leq$
				/		$> \leq$
:		:	:	/	:	
:		:	:		:	

:

/

/

/	/	/	/	β
/	/	/	/	β
/	/	/	/	β
/	/	/	/	β
				δ
				δ
				δ
				δ
	/		/	δ
	/		/	δ
	/		/	δ
/	/	/	/	σ
/	/	/	/	γ
/	/	/	/	log likelihood

:

t

کارایی فنی بهره‌برداران در شهرستان خاش و سراوان

				$\gamma =$	
				$\delta =$	
				$\delta = \delta = \delta = \delta = \delta = \delta =$	
				$\delta = \delta = \delta =$	
				$\delta = \delta = \delta =$	

:

	/					\leq
/	/					$> \leq$
/	/			/		$> \leq$
	/			/		$> \leq$
:	/:		:	/:		
/:	/:		:	:		

:

/

/

/

	/					≤
/	/					> ≤
	/		/	/		> ≤
	/			/		> ≤
:		/:	/:		:	
:		:	:		/:	

:

/

t / /

مشخص گردید که اختلاف بین میانگین دو گروه در سطح ۵ درصد معنی دار نیست و علی‌رغم بالاتر بودن کارایی وام‌گیرندگان، اختلاف معنی داری بین این دو گروه وجود ندارد.

پیشنهادها

یادداشت‌ها

3. Taylor, Drummond and Gomes, 1986

4. Sial, 1990

7. Farrell, 1957

9. Aigner and Chav, 1986

10. Battese and Coelli, 1993

11. Aigner, Lovell and Schmidt, 1977

12. compound error model

13. Ordinary Least Square

14. Maximum Likelihood Estimation

15. Battese and Coelli, 1993

16. Pitt and Lee, 1981

17. *ibid.*

18. -TARM: Traditional Average Response Model

منابع

- « . . . » () .
:
() .
- » () .
« . . . »
() .
:
- Aigner, D.J.; Lovell, C.A.K. and Schmidt, P. (1977), "Formulation and estimation of stochastic frontier production function models". *Journal of Econometrics*. No. 61, pp. 21-37.
- Battese, G. E. and Coelli, T.G. (1993), "A stochastic frontier production function in incorporating a model for technical inefficiency effects". *Working Papers in Econometrics*. New York: University of New York.
- Farrell, M.J. (1957), "The measurement of productive efficiency" *Journal of the Royal Statistical Society*. No. 120, pp. 253-281.
- Pitt, M.M. and Lee, L.F. (1981), "Measurement and sources of the technical inefficiency in the Indonesian weaving industry". *Journal of Development Economics*. No. 9, pp. 43-64.
- Sial, M.H. (1990), *Impact of Agricultural Credit on Small Farm Productivity in Punjab Pakistan*. Thesis, Madison: University of Wisconsin.
- Taylor, G.T.; Drummond, I.E. and Gomes, A.T. (1986), "Agricultural credit programs and production efficiency: An analysis of traditional farming in South Eastern Minas Gerais, Brazil". *American Journal of Agricultural Economics*. Vol. 68, No. 1, pp. 110-119.